



FITTING SUPPLY COMPANY LIMITED

CAM & GROOVE COUPLINGS FOR HOSE & PIPE Specifications

SIZES: 3/4", 1", 1-1/4", 1-1/2", 2", 2-1/2", 3", 4", 5", 6", 8"

COMPONENTS: Body: Aluminum (QQ-A-601, A-380 Aluminum alloy castings)
 Brass (QQ-C-390, Copper alloy castings)
 Stainless Steel (316 Stainless Steel investment castings)
 Ductile Iron (Plated Ductile Iron castings)
 Ny-Glass (Fiberglass Reinforced Nylon / Temp. range: -30° to 200° F)
 Poly-Glass (Fiberglass Reinforced Polypropylene / Temp. range 10° to 180° F)

Handles: Brass
 Stainless Steel

Finger Rings Standard Sizes
 1" to 8"

STANDARDS: Manufactured to Mil Spec 27487 tolerances. Interchangeable with all major brands of this type coupling.

Maximum Operating Pressure

	3/4"	1"	1-1/4"	1-1/2"	2"	2-1/2"	3"	4"	5"	6"	8"
Aluminum	250	250	250	250	250	150	125	100	75	75	50
Brass	250	250	250	250	250	150	125	100	75	75	50
Stainless Steel	250	250	250	250	250	150	150	125	75	75	--
Ductile Iron	--	--	--	150	150	--	150	125	--	--	--
Ny-Glass	100	100	100	100	100	--	50	50	--	--	--
Poly-Glass	100	100	100	100	100	--	50	50	--	--	--

Maximum Operating Pressure

	3/4"	1"	1-1/4"	1-1/2"	2"	2-1/2"	3"	4"	5"	6"	8"
Aluminum	250	250	250	250	250	150	125	100	75	75	50
Brass	250	250	250	250	250	150	125	100	75	75	50
Stainless Steel	250	250	250	250	250	150	150	125	75	75	--
Ductile Iron	--	--	--	150	150	--	150	125	--	--	--
Ny-Glass	100	100	100	100	100	--	50	50	--	--	--
Poly-Glass	100	100	100	100	100	--	50	50	--	--	--

PSI – At Room Temperature

Gasket Material	Gasket Temperature Ratinas	Color Code Blue Red
-----------------	----------------------------	---------------------

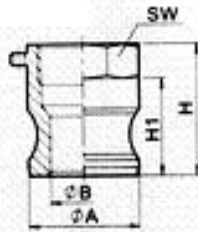
CAM-LOCK TYPE COUPLING SAFETY PRECAUTIONS

- Low pressure connection.
- Match product to be conveyed with proper alloy couplings.
- Pressure test hose assembly, prior to application, to ensure tight and leak free assembly of hose, coupling & clamp.
- Fluidized dry products are more abrasive than liquids. In those applications, couplings should be frequently checked for excessive wear and replaced when necessary.
- Pressurized media creates hazardous conditions. Tie-off hose ends to guard against accidental separation of lines and to prevent whipping or bucking of the hose.
- Use handle locking devices.
- Additional Safety information available online: www.hosecoupling.com



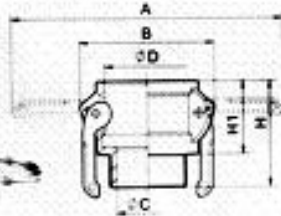
FITTING SUPPLY COMPANY LIMITED

ADAPTER "A"



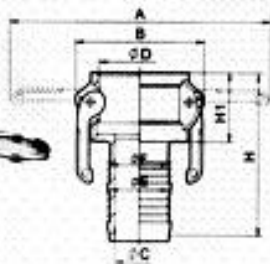
型号	螺纹	口径	ϕA	ϕB	H1	H	SW
A1/2"	1/2"	15	32.0	21.2	28.0	38.0	33.0
A3/4"	4/3"	20	32.0	21.2	28.0	38.0	33.0
A1"	1"	25	36.7	23.8	33.5	46.5	41.0
A1 1/4"	1 1/4"	32	45.5	28.6	40.0	55.0	48.0
A1 1/2"	1 1/2"	40	53.4	36.0	42.5	58.5	56.0
A2"	2"	50	63.0	45.5	47.5	62.3	67.5
A2 1/2"	2 1/2"	65	75.7	56.4	50.0	68.0	83.0
A3"	3"	80	91.5	73.5	51.0	70.0	96.5
A4"	4"	100	119.5	100.0	53.0	76.0	124.0

COUPLER "B"



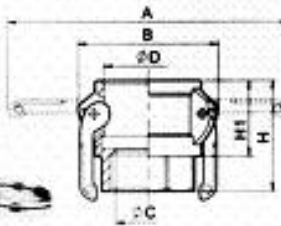
型号	螺纹	口径	A	B	ϕC	ϕD	H1	H
B1/2"	1/2"	15	115.0	57.0	15.0	32.4	30.0	48.0
B3/4"	3/4"	20						
B1"	1"	25	115.0	57.0	21.2	32.4	30.0	48.0
B1 1/4"	1 1/4"	32	137.0	65.6	25.0	37.3	39.0	61.0
B1 1/2"	1 1/2"	40	183.0	77.0	28.0	46.0	46.0	68.0
B2"	2"	50	191.0	85.0	39.0	54.0	48.0	70.5
B2 1/2"	2 1/2"	65	201.0	96.0	50.0	63.7	53.0	78.7
B3"	3"	80	213.0	110.4	58.0	76.5	58.0	86.0
B4"	4"	100	267.0	133.0	73.2	92.2	58.0	89.0

COUPLER "C"



型号	螺纹	口径	A	B	ϕC	ϕD	ϕE	ϕF	H1	H
	1/2"	15								
C3/4"	3/4"	20	115	57.0	13.6	32.4	20.7	19.4	30.0	80.0
C1"	1"	25	137	65.6	20.0	37.3	27.7	25.8	39.0	99.0
C1 1/4"	1 1/4"	32	183	77.0	25.8	46.0	33.9	32.9	46.0	110.0
C1 1/2"	1 1/2"	40	191	85.0	31.3	54.0	40.5	38.6	48.0	114.0
C2"	2"	50	201	96.0	43.8	63.7	52.0	51.0	53.0	129.0
C2 1/2"	2 1/2"	65	213	110.4	55.7	76.5	66.8	—	58.0	151.0
C3"	3"	80	267	133.0	68.0	92.2	79	—	58.0	160.0
C4"	4"	100	296	166.0	92.0	120.2	104.8	—	63.0	176.0

ADAPTER "D"

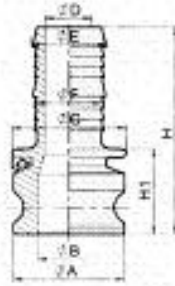


型号	螺纹	口径	A	B	ϕC	ϕD	H1	H
D1/2"	1/2"	15	115.0	57.0	17.0	32.4	30.0	46.0
D3/4"	3/4"	20	115.0	57.0	20.0	32.4	30.0	50.0
D1"	1"	25	137.0	65.6	26.0	37.3	39.0	60.0
D1 1/4"	1 1/4"	32	183.0	77.0	34.5	46.0	46.0	66.0
D1 1/2"	1 1/2"	40	191.0	85.0	40.0	54.0	48.0	70.5
D2"	2"	50	201.0	96.0	50.0	63.7	53.0	76.0
D2 1/2"	2 1/2"	65	213.0	110.0	61.5	76.5	58.0	82.0
D3"	3"	80	267.0	133.0	75.0	92.2	58.0	86.0
D4"	4"	100	296.0	166.0	100.0	120.2	63.0	92.0



FITTING SUPPLY COMPANY LIMITED

ADAPTER "E"



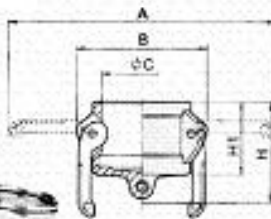
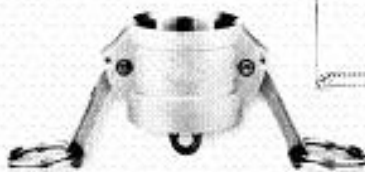
型号	螺纹	直径	ϕA	ϕB	ϕC	ϕD	ϕE	ϕF	H1	H
E1/2"	1/2"	15	—	—	—	—	—	—	—	—
E3/4"	3/4"	20	32.0	21.2	33.0	13.6	20.7	19.4	37.0	87.0
E1"	1"	25	36.7	23.8	39.0	20.0	27.7	25.8	44.0	104.0
E1 1/4"	1 1/4"	32	45.5	28.6	48.0	25.8	33.9	32.9	51.0	115.0
E1 1/2"	1 1/2"	40	53.4	36.0	56.0	31.3	40.5	38.6	52.0	118.0
E2"	2"	50	63.0	45.5	66.0	43.8	52.0	51.0	56.0	132.0
E2 1/2"	2 1/2"	65	75.7	55.7	80.0	55.7	66.8	—	64.0	156.0
E3"	3"	80	91.5	73.2	101.0	68.0	79.0	—	66.0	169.0
E4"	4"	100	119.5	91.0	130.0	92.0	104.8	—	68.0	180.0

ADAPTER "F"



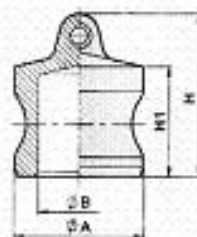
型号	螺纹	直径	ϕA	ϕB	ϕD	H1	H	SW
F1/2"	1/2"	15	32.0	21.2	15.0	28.0	56.0	33.0
F3/4"	3/4"	20	32.0	21.2	21.2	28.0	56.0	33.0
F1"	1"	25	36.7	23.8	23.8	33.5	69.0	41.0
F1 1/4"	1 1/4"	32	45.5	28.6	33.0	40.0	77.0	48.0
F1 1/2"	1 1/2"	40	53.4	36.0	39.6	42.5	80.0	56.0
F2"	2"	50	63.0	45.5	50.0	47.5	89.0	65.0
F2 1/2"	2 1/2"	65	75.7	56.4	56.4	50.0	98.0	62.5
F3"	3"	80	91.5	73.2	77.5	51.0	101.0	95.8
F4"	4"	100	119.5	100.0	100.0	53.0	114.0	124.0

COUPLER "DC"



型号	螺纹	直径	A	B	ϕC	H1	H
DC1/2"	1/2"	15	—	—	—	—	—
DC3/4"	3/4"	20	115.0	57.0	32.4	30.0	40.0
DC1"	1"	25	137.0	65.6	37.3	39.0	53.0
DC1 1/4"	1 1/4"	32	183.0	77.0	46.0	46.0	61.0
DC1 1/2"	1 1/2"	40	191.0	85.0	54.0	48.5	64.0
DC2"	2"	50	201.0	96.0	63.7	53.3	68.0
DC2 1/2"	2 1/2"	65	213.0	110.0	76.5	58.0	82.0
DC3"	3"	80	267.0	133.0	92.2	58.0	83.0
DC4"	4"	100	296.0	166.0	120.2	63.0	93.0

ADAPTER "DP"



型号	螺纹	直径	ϕA	ϕB	H1	H
DP1/2"	1/2"	15	—	—	—	—
DP3/4"	3/4"	20	32.0	21.2	25.0	35.0
DP1"	1"	25	36.7	23.8	30.5	44.5
DP1 1/4"	1 1/4"	32	45.5	28.6	37.7	52.7
DP1 1/2"	1 1/2"	40	53.4	36.0	38.7	53.7
DP2"	2"	50	63.0	45.5	42.8	57.8
DP2 1/2"	2 1/2"	65	75.7	56.4	46.0	71.0
DP3"	3"	80	91.5	73.2	46.0	72.0
DP4"	4"	100	119.5	100.0	50.0	76.0